



0 3 6 km



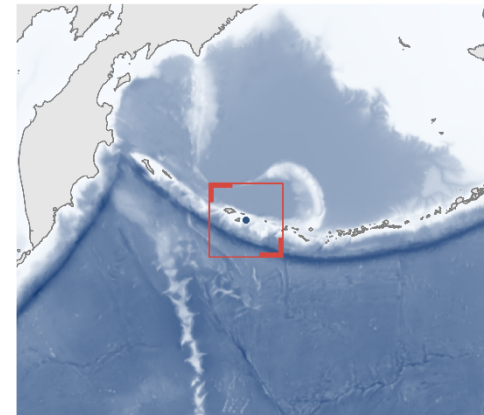
174.20°E

174.40°E

Pacific Ocean

53.55°N

52.40°N



Blue lines indicate the area meeting the ISRA Criteria; dashed lines indicate the suggested buffer for use in the development of appropriate place-based conservation measures

EAST AGATTU ISLAND ISRA

North American Pacific Region

SUMMARY

East Agattu Island is located in Alaskan waters of the United States of America. It is situated east of Agattu Island and next to the Buldir Pass, in the western part of the Aleutian Archipelago. The area is characterised by sandy and rocky substrates, coral and sponge communities, and strong eddy activity that promotes primary productivity. Within this area there are: **reproductive areas** (Butterfly Skate *Bathyraja mariposa*).

CRITERIA

Sub-criterion C1 - Reproductive Areas

— —
UNITED STATES OF AMERICA
 — —

100-190 metres

— —
57.24 km²
 — —





DESCRIPTION OF HABITAT

East Agattu Island is located in Alaskan waters of the United States of America. It is situated east of Agattu Island (the second largest of the Near Islands) and southeast of Shemya Island. It sits next to the Buldir Pass, in the western part of the Aleutian Archipelago (Zimmermann & Prescott 2020). This is the largest (~130 km) pass in the region and separates the Aleutian Trench (Pacific Ocean) and the Bering Sea (Hunt & Stabeno 2005; Khudyakova et al. 2025). The area is characterised by sandy and rocky substrates with sponge and coral communities (Rooper et al. 2014; NOAA-AFSC 2026).

This area is influenced by the Alaska Stream, an intense boundary current flowing westward along the shelf break and the Aleutian Trench (Budyansky et al. 2022). This current enters into the Bering Sea through the deepest straits of the Aleutian Archipelago, including Near Strait (Khudyakova et al. 2025). It has strong eddy activity that transports relatively warm, salty, and nutrient-rich waters promoting primary production and defining the water flow through all the straits in the Aleutian Islands (Rogachev & Shlyk 2018; Mordy et al. 2023). Bottom water temperature ranges ~3.5-4.5°C (NOAA-AFSC 2026)

This Important Shark and Ray Area is benthic, subsurface, and is delineated from 100-190 m based on the depth range of Qualifying Species in the area.

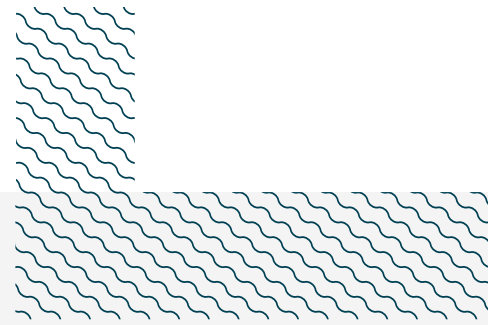
ISRA CRITERIA

SUB-CRITERION C₁ – REPRODUCTIVE AREAS

East Agattu Island is an important reproductive area for one ray species.

Between 1982-2025, the Alaska Fisheries Science Center (AFSC) - National Oceanic and Atmospheric Administration (NOAA) conducted trawl surveys during the late boreal spring and summer in the Bering Sea, the Aleutian Islands, and the Gulf of Alaska (NOAA-AFSC 2026). Temporal coverage of the surveys varies per region with most conducted annually (e.g., continental shelf surveys in the Bering Sea), or biennially (e.g., Gulf of Alaska) since 1999 (Hoff 2016; Siple et al. 2024; Markowitz et al. 2025; Dowlin et al. 2026). The continental slope survey in the Bering Sea stopped in 2016 (Markowitz et al. 2025). Surveys are conducted at fixed stations or following a stratified random survey design and covering depths from 0-1,000 m divided in multiple depth strata across 300-500 stations per region. In general, otter trawls of ~25 m headrope and ~34 m footrope were used and tows lasted between 15-30 minutes at a speed of ~3 knots. Catch-per-unit-effort (CPUE) was estimated as the number of individuals/number of egg cases per square kilometre (no/km²) and the area swept (km²) as the linear distance towed, multiplied by the mean net width (Hoff 2016; Siple et al. 2024; Markowitz et al. 2025; Dowlin et al. 2026).

Between 2009-2022, the presence of Butterfly Skate egg cases was recorded in 34 tows during trawl surveys across the whole region surveyed, four (11.8%) of which were recorded inside this area in July 2012 and 2016 at depths of 100-187 m (NOAA-AFSC 2026). The highest mean CPUE (mean = 137.6 egg cases/km²; 40.8-338.3) of Butterfly Skate egg cases was recorded in this area compared to the whole region surveyed (mean CPUE outside the area = 98.3 egg cases/km²; 36.0-784.4).



Acknowledgments

Thomas J Farrugia (Alaska Ocean Observing System), Cindy Tribuzio (Independent Researcher), Bruce Wright (Knik Tribe), and Emiliano García-Rodríguez (IUCN SSC Shark Specialist Group - ISRA Project) contributed and consolidated information included in this factsheet. We thank all participants of the 2026 ISRA Region 11 - North American Pacific region workshop for their contributions to this process.

This factsheet has undergone review by the ISRA Independent Review Panel prior to its publication.

This project was funded by the Shark Conservation Fund, a philanthropic collaborative pooling expertise and resources to meet the threats facing the world's sharks and rays. The Shark Conservation Fund is a project of Rockefeller Philanthropy Advisors.

Suggested citation

IUCN SSC Shark Specialist Group. 2026. East Agattu Island ISRA Factsheet. Dubai: IUCN SSC Shark Specialist Group.

QUALIFYING SPECIES

Scientific Name	Common Name	IUCN Red List Category	Global Depth Range (m)	ISRA Criteria/Sub-criteria Met								
				A	B	C1	C2	C3	C4	C5	D1	D2
RAYS												
<i>Bathyraja mariposa</i>	Butterfly Skate	LC	90-455			X						

SUPPORTING SPECIES

Scientific Name	Common Name	IUCN Red List Category
RAYS		
<i>Bathyraja panthera</i>	Leopard Skate	DD
<i>Bathyraja taranetzi</i>	Mud Skate	LC

IUCN Red List of Threatened Species Categories are available by searching species names at www.iucnredlist.org Abbreviations refer to: CR, Critically Endangered; EN, Endangered; VU, Vulnerable; NT, Near Threatened; LC, Least Concern; DD, Data Deficient.





REFERENCES

- Budyansky MV, Prants SV, Uleysky MY. 2022.** Odyssey of Aleutian eddies. *Ocean Dynamics* 72: 455-476. <https://doi.org/10.1007/s10236-022-01508-w>
- Dowlin AN, Siple MC, von Szalay PG. 2026.** Data Report: 2024 Aleutian Islands bottom trawl survey. AFSC Processed Rep. 2026-03. Seattle: NOAA-NMFS Alaska Fisheries Science Center.
- Hoff GR. 2016.** Results of the 2016 Eastern Bering Sea upper continental slope survey of groundfish and invertebrate resources. NOAA Technical Memorandum NMFS-AFSC: 339. Seattle: NOAA-NMFS Alaska Fisheries Science Center.
- Hunt GL, Stabeno PJ. 2005.** Oceanography and ecology of the Aleutian Archipelago: Spatial and temporal variation. *Fisheries Oceanography* 14: 292-306. <https://doi.org/10.1111/j.1365-2419.2005.00378.x>
- Khudyakova SP, Belonenko TV, Budyansky MV, Uleysky MY. 2025.** Investigation of the volume transport variability through the Near Strait (Aleutian Islands) based on global ocean reanalyses. *Physical Oceanography* 32: 771-787.
- Markowitz EH, Rohan SK, Wasserman S, Charriere NE, Anderson CB, Stevenson DE. 2025.** Results of the 2010 Eastern and Northern Bering Sea Continental Shelf Bottom Trawl Survey of Groundfish and Invertebrate Fauna. NOAA Technical Memorandum NMFS-AFSC-499. Seattle: NOAA-NMFS Alaska Fisheries Science Center.
- Mordy C, Bond N, Coker E, Deary A, Lemagie E, Proctor P, Stabeno P, Tabisola H, Van Pelt T, Wisegarver E. 2023.** Progress of fisheries-oceanography coordinated investigations in the Gulf of Alaska and Aleutian Passes. *Oceanography* 36: 94-100. <https://doi.org/10.5670/oceanog.2023.218>
- NOAA Fisheries Alaska Fisheries Science Center (NOAA-AFSC). 2026.** Fisheries One Stop Shop Public Data: RACE Division Bottom Trawl Survey Data Query. Available at: <https://www.fisheries.noaa.gov/foss> Accessed March 2026.
- Rogachev KA, Shlyk NV. 2018.** The role of the Aleutian eddies in the Kamchatka Current warming. *Russian Meteorology and Hydrology* 43: 43-48. <https://doi.org/10.3103/S1068373918010065>
- Ropper CN, Zimmermann M, Prescott MM, Hermann AJ. 2014.** Predictive models of coral and sponge distribution, abundance and diversity in bottom trawl surveys of the Aleutian Islands, Alaska. *Marine Ecology Progress Series* 503: 157-176. <https://doi.org/10.3354/meps10710>
- Siple MC, von Szalay PG, Raring NW, Dowlin AN, Riggle BC. 2024.** Data Report: 2023 Gulf of Alaska bottom trawl survey. AFSC Processed Rep. 2024-09. Seattle: NOAA-NMFS Alaska Fisheries Science Center.
- Zimmermann M, Prescott MM. 2021.** Passes of the Aleutian Islands: First detailed description. *Fisheries Oceanography* 30: 280-299. <https://doi.org/10.1111/fog.12519>